









First Impressions In The Garden

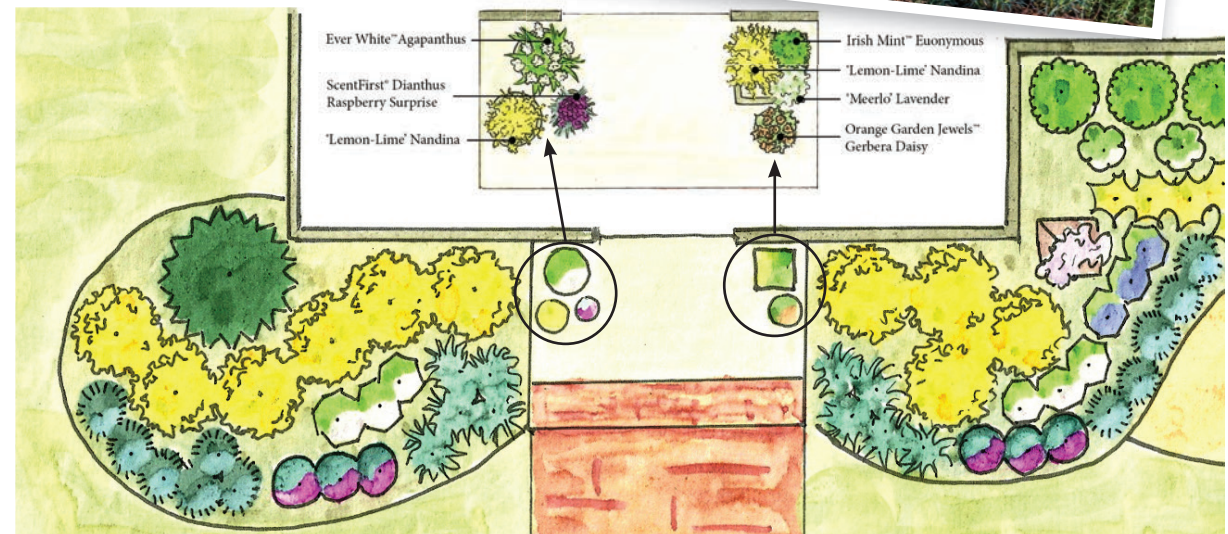
This stylish side entrance design offers inspiration for a “first impressions” garden—the areas of the landscape visitors see as they approach the home.

By planting a warm and inviting garden you set the tone for visitors to your home.



PLANT LIST

-  'Sunshine' *Ligustrum* **SL**
-  Baby Gem™ *Boxwood* **SL**
-  Chef's Choice® *Rosemary* **SL**
-  Ever White™ *Agapanthus* **SL**
-  Raspberry Surprise *ScentFirst*® *Dianthus* **SL**
-  Clarity Blue™ *Dianella* **SL**
-  Ever Sapphire™ *Agapanthus* **SL**
-  Amethyst Falls™ *Wisteria* **SL**



-  Evergreen Stella™ *Daylily* **SL**
-  White Garden Jewels™ *Gerbera Daisy* **SL**
-  Irish Mint™ *Euonymous* **SL**

Find more garden plans at southernlivingplants.com